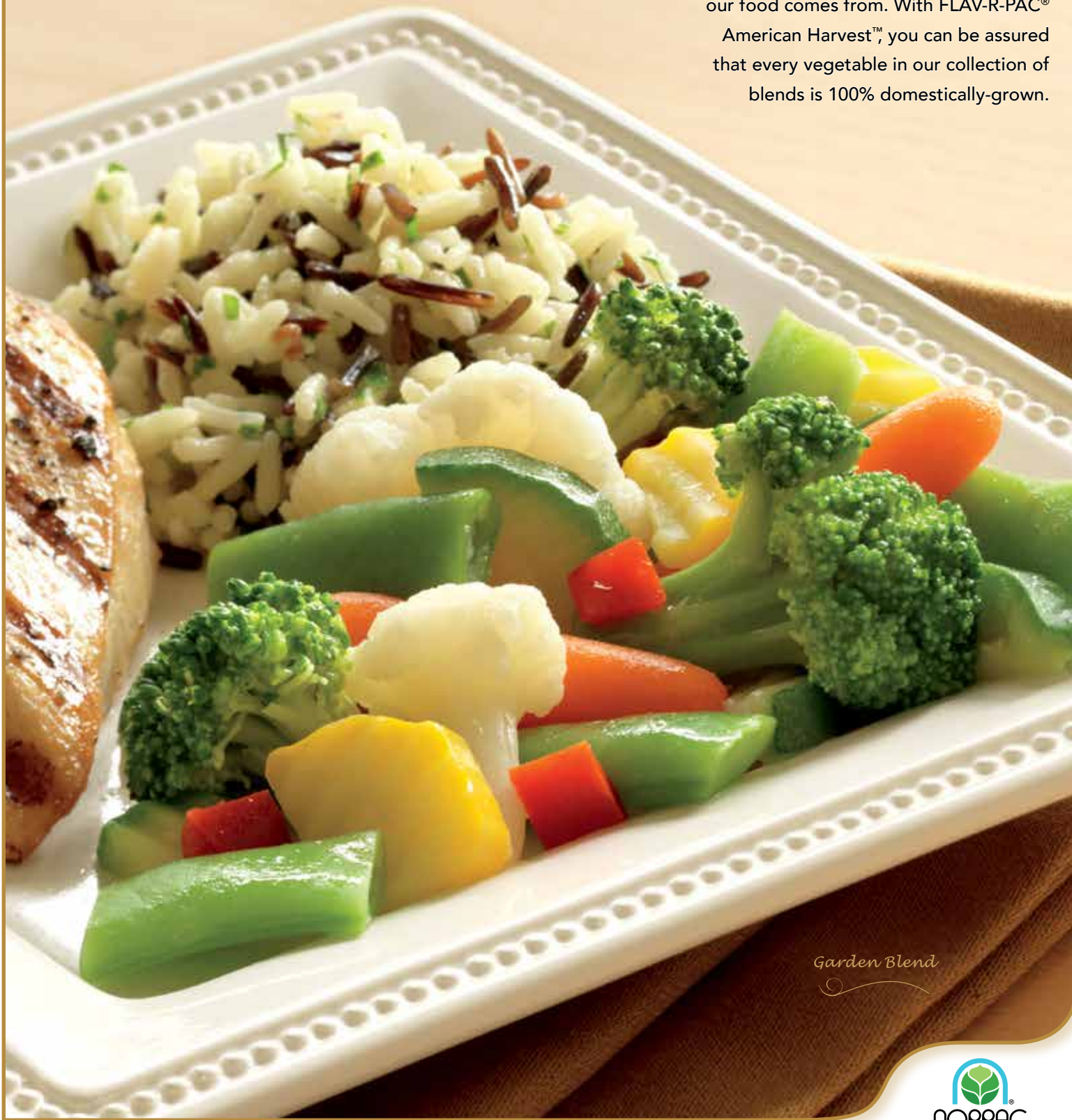




It's more relevant than ever to know where our food comes from. With FLAV-R-PAC® American Harvest™, you can be assured that every vegetable in our collection of blends is 100% domestically-grown.



Garden Blend



Support local farmers and serve meals with pride when you choose any of these versatile and delicious American-grown FLAV-R-PAC® vegetable blends.



GARDEN BLEND

Broccoli, cauliflower, Italian type green beans, carrots, zucchini, yellow squash and red peppers.



CASCADE BLEND

Carrots, yellow carrots and green beans.



CHUCKWAGON CORN

Corn, green peppers, onions and red peppers.



COUNTRY TRIO

Corn, carrots and green beans.



CAPRI BLEND

Carrots, green beans, yellow squash and zucchini.



FAJITA BLEND

Red peppers, green peppers, yellow peppers and onions.



ITALIAN BLEND

Zucchini, cauliflower, Italian type green beans, lima beans and red peppers.



SCANDINAVIAN BLEND

Peas, zucchini, green beans, carrots and onions.



IMPERIAL BLEND

Green beans, broccoli, onions, red peppers and mushrooms.



OREGON BEAN MEDLEY

Green beans, wax beans, carrots, kidney beans, peas and lima beans.



SOUTHWEST BLEND

Corn, black beans, poblano peppers, red peppers and onions.



	Serving Size	Calories (per serving)	Total Fat (g)	Saturated Fat (g)	Trans Fat (g)	Cholesterol (mg)	Sodium (mg)	Total Carbohydrates (g)	Dietary Fiber (g)	Total Sugar (g)	Added Sugar (g)	Protein (g)	Vitamin D (%)	Calcium (%)	Iron (%)	Potassium (%)
NUTRITIONAL INFORMATION																
Capri Blend	3/4 Cup/85g	25	0	0	0	0	15	6	2	2	0	1	0	2	0	4
Cascade Blend	3/4 Cup/79g	30	0	0	0	0	35	7	2	2	0	1	0	2	0	4
Chuckwagon Corn	2/3 Cup/91g	90	0.5	0	0	0	0	18	2	3	0	2	0	0	0	4
Country Trio	2/3 Cup/83g	60	0	0	0	0	10	12	2	3	0	2	0	2	0	4
Fajita Blend	3/4 Cup/79g	25	0	0	0	0	0	5	1	3	0	1	0	0	0	2
Garden Blend	3/4 Cup/75g	20	0	0	0	0	10	4	2	2	0	1	0	2	0	4
Imperial Blend	1 Cup/85g	25	0	0	0	0	5	5	2	2	0	1	0	2	0	4
Italian Blend	3/4 Cup/85g	30	0	0	0	0	25	6	2	2	0	1	0	2	0	4
Oregon Bean Medley	2/3 Cup/85g	50	0	0	0	0	45	9	3	2	0	2	0	4	6	4
Scandinavian Blend	3/4 Cup/85g	40	0	0	0	0	45	7	2	3	0	2	0	2	6	4
Southwest Blend	2/3 Cup/89g	80	1	0	0	0	75	15	6	4	0	4	0	2	6	6

PACK INFORMATION							
	Key Information (see legend below)	CAT #	Pack Size	Gross Case Weight (lbs)	Case Cube	Pallet Pattern	Outside Case Dimensions
Capri Blend	■ ▼	108502	6/4 lbs.	26	1.12	8 x 7	18.875 x 11.375 x 9
Cascade Blend	■ ▼	108392	6/4 lbs.	26	1.12	8 x 7	18.875 x 11.375 x 9
Chuckwagon Corn	■ ▼	108625	6/4 lbs.	26	0.82	10 x 7	15.375 x 10.875 x 8.50
Country Trio	■ ▼	109109	6/4 lbs.	26	1.12	8 x 7	18.875 x 11.375 x 9
Fajita Blend	■ ▼	108766	6/4 lbs.	26	1.12	8 x 7	18.875 x 11.375 x 9
Garden Blend	■ ▼	108865	6/4 lbs.	26	1.12	8 x 7	18.875 x 11.375 x 9
Imperial Blend	■ ▼	108753	6/4 lbs.	26	1.21	8 x 7	19.375 x 12.375 x 8.75
Italian Blend	■ ▼	108872	6/4 lbs.	26	1.08	9 x 7	16.875 x 11.375 x 9.75
Oregon Bean Medley	■ ▼	108709	6/4 lbs.	26	0.91	9 x 8	17.375 x 10.375 x 8.75
Scandinavian Blend	■ ▼	109064	6/4 lbs.	26	0.91	9 x 8	17.375 x 10.375 x 8.75
Southwest Blend	■ ▼	109011	6/4 lbs.	26	0.91	9 x 8	17.375 x 10.375 x 8.75

■ Gluten Free ▼ Vegan



Learn more about NORPAC and our capabilities. Contact your local OPC Companies representative or visit oregonpotato.com.



An Oregon Potato Family Company